



Minimum Required Purchase:

100 Account Route \$50,000.00

Purchase Includes: Master Distributor Agreement for 1million+ in population

- ✚ 416 12 pack cases of evenly mixed craft soda (2 full pallets)
- ✚ 416 12 pack cases of evenly mixed sparkling water (2 full pallets)
- ✚ 100 Tower Beverage floor displays for introduction
- ✚ 100 Tower Beverage 8" x 8" window signs (1 for each account)
- ✚ 100 Tower Beverage 4" x 4" front door decals
- ✚ 100 Tower Beverage promo t-shirts (1 for each account)
- ✚ 100 Tower Beverage promo hats (1 for each account)
- ✚ 500 Tower Beverage business cards
- ✚ 500 Sell Sheets
- ✚ 100 high traffic accounts signed on your behalf.
- ✚ Full pallet re-order cost is \$873.60 delivered (\$0.25 inventory credit for 1st 18 months)

50 Account Route \$25,000.00

Purchase Includes: Master Distributor Agreement for up to 500K in population

- ✚ 208 12 pack cases of evenly mixed craft soda (1 full pallet)
- ✚ 208 12 pack cases of evenly mixed sparkling water (1 full pallet)
- ✚ 50 Tower Beverage floor displays for introduction
- ✚ 50 Tower Beverage 8" x 8" window signs (1 for each account)
- ✚ 50 Tower Beverage 4" x 4" front door decals
- ✚ 50 Tower Beverage promo t-shirts (1 for each account)
- ✚ 50 Tower Beverage promo hats (1 for each account)
- ✚ 250 Tower Beverage business cards
- ✚ 250 Sell Sheets
- ✚ 50 high traffic accounts signed on your behalf.
- ✚ Full pallet re-order cost is \$873.60 delivered (\$0.25 inventory credit for 1st 18 months)

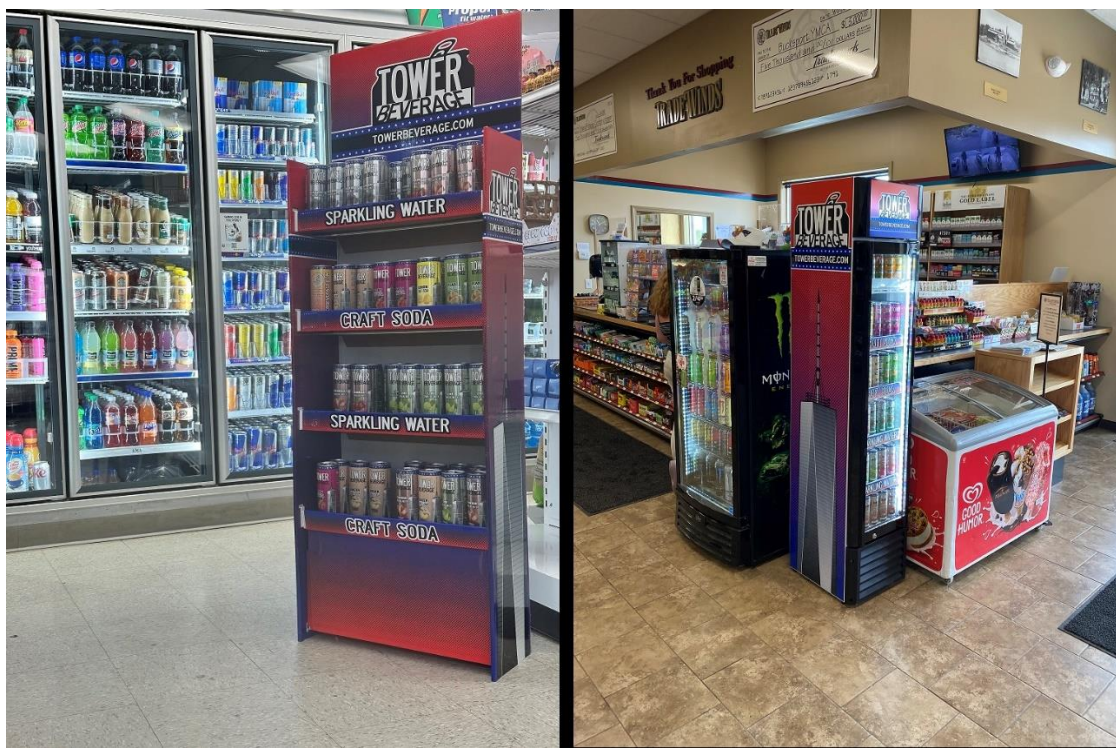
Master Statewide Distributorships Also Available!

Call Bill Richards Today 347-254-1080

FREE SAMPLES



High Traffic Accounts Included:

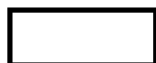


Note: This potential profit chart is for illustration purposes only!

	6 sold daily	9 sold daily	12 sold daily	18 sold daily
25	\$2,250	\$3,375	\$4,500	\$6,750
50	\$4,500	\$6,750	\$9,000	\$13,500
100	\$9,000	\$13,500	\$18,000	\$27,000



Indicates the number of beverages sold per day



Indicates monthly gross profit generated



Indicates the number of accounts serviced

ASSUMPTIONS FOR 100 ACCOUNT ROUTES

Servicing 25 accounts per day x 4 days = 100 accounts serviced per week.

100 Accounts selling 6 beverages daily = 600 beverages sold per day x 30 days = 18,000 beverages sold per month (100 account route).

18,000 beverages sold per month x \$0.50 (your profit) = \$9,000.00 in monthly gross income to the distributor.

MSRP* \$1.49 - \$1.99**

\$0.85 (sold to retailer)

\$0.35 (your cost delivered)

\$0.50 (your gross profit per can)

NOTE: Income earned by our distributors is based solely upon how much effort is set forth by "the distributor".

(This is not a guarantee of income chart)

FREE SAMPLES